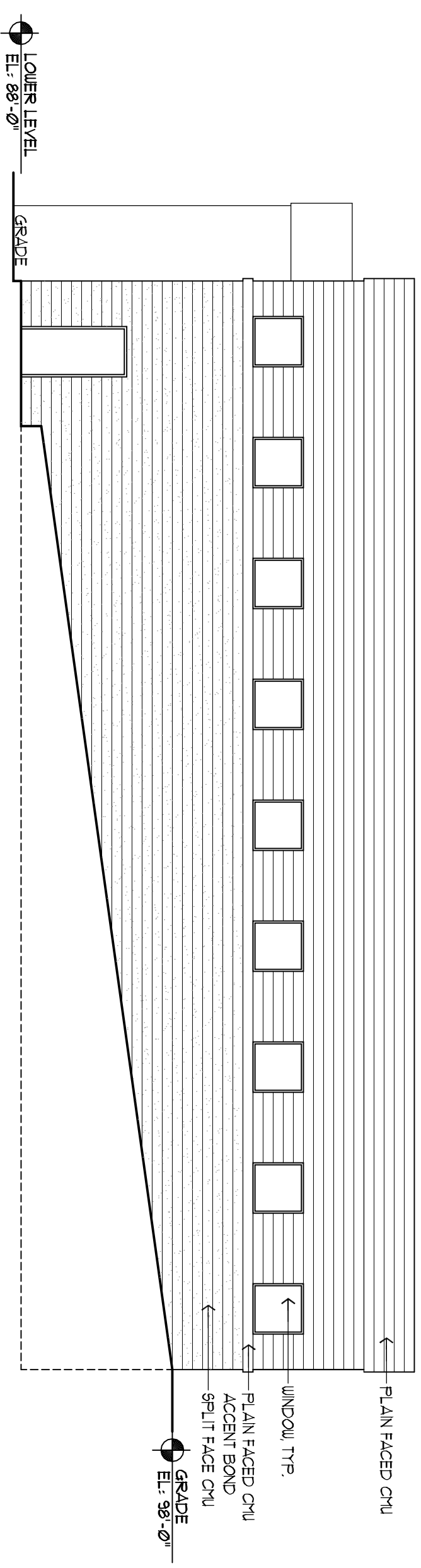
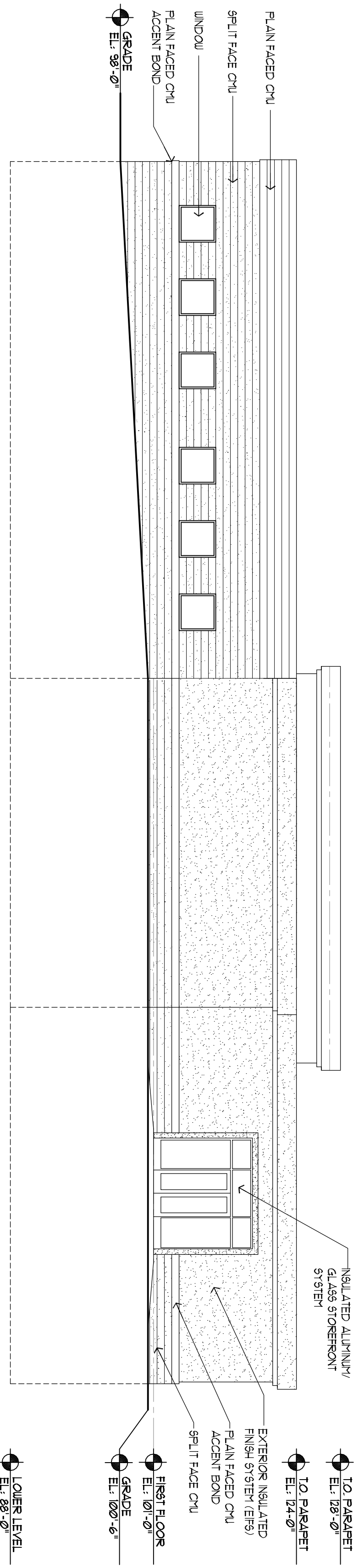


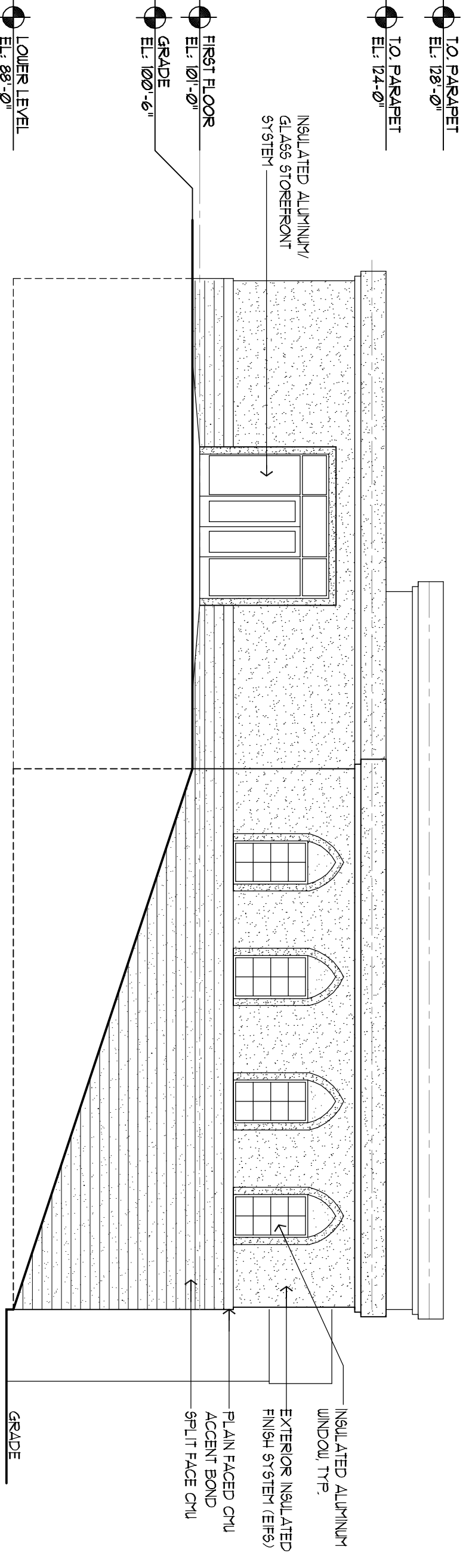
1 NORTH EAST ELEVATION  
SCALE: 1/8" = 1'-0"



2 NORTH WEST ELEVATION  
SCALE: 1/8" = 1'-0"



3 SOUTH WEST ELEVATION  
SCALE: 1/8" = 1'-0"



4 SOUTH EAST ELEVATION  
SCALE: 1/8" = 1'-0"

Revisions

Sheet Title:  
Elevations

Drawn By:  
EC

Sheet Number

**A-2**

Date: 08-24-09  
Project Number: